

Cuyahoga County Greenprint - 2015



Cuyahoga
County Planning
Commission

Daniel Meaney, GISP

Manager, Information & Research
216-443-3709

dmeaney@cuyahogacounty.us

<http://planning.co.cuyahoga.oh.us/>

Elaine Price

Program Manager – Greenspace
216-443-3721

eprice@cuyahogacounty.us

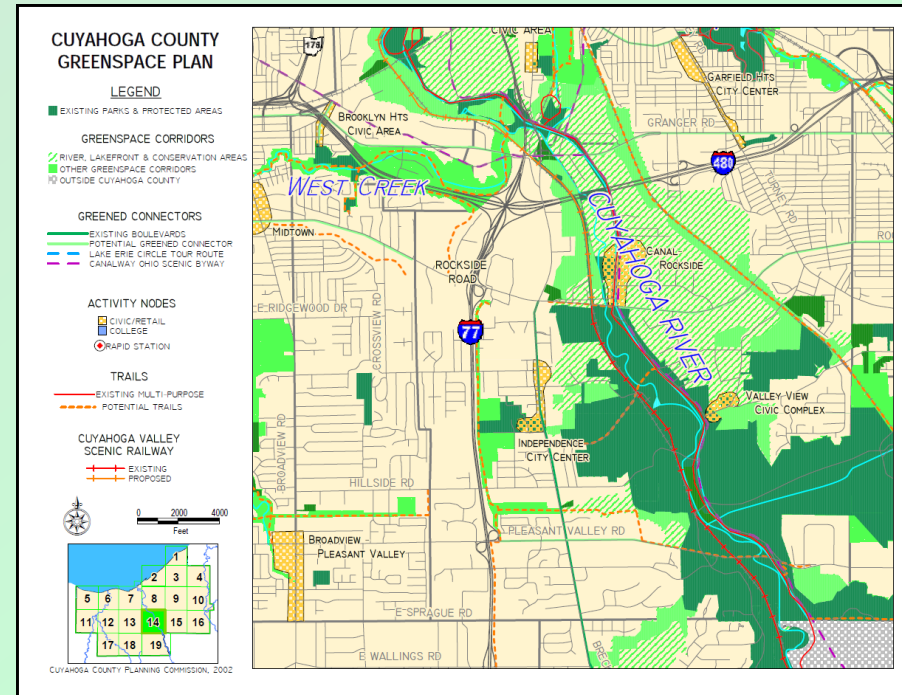
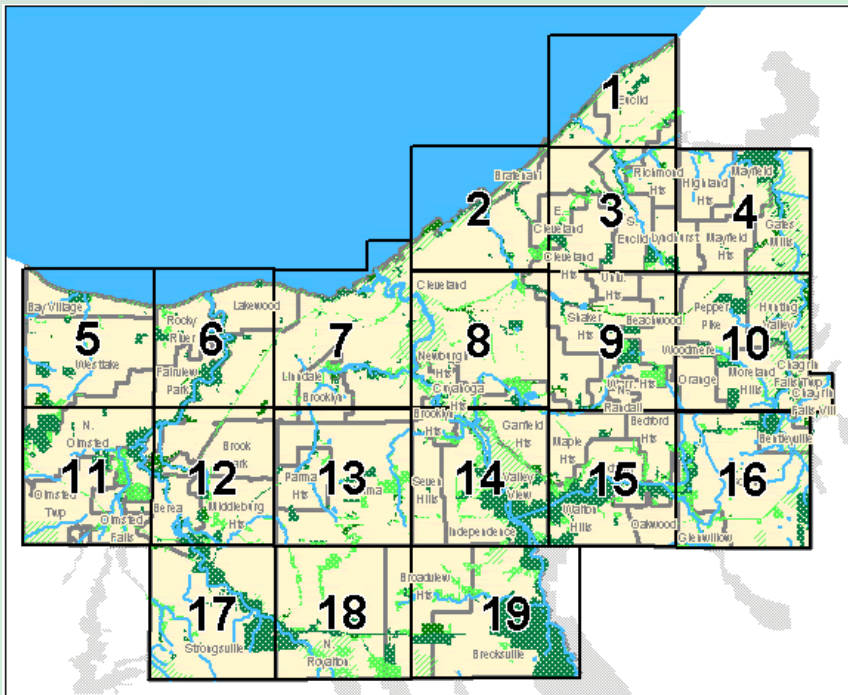
<http://planning.co.cuyahoga.oh.us/greenprint/>



Greenprint Viewer

- Update to the 2002 County Greenprint

Cuyahoga County Greenspace Plan Greenprint

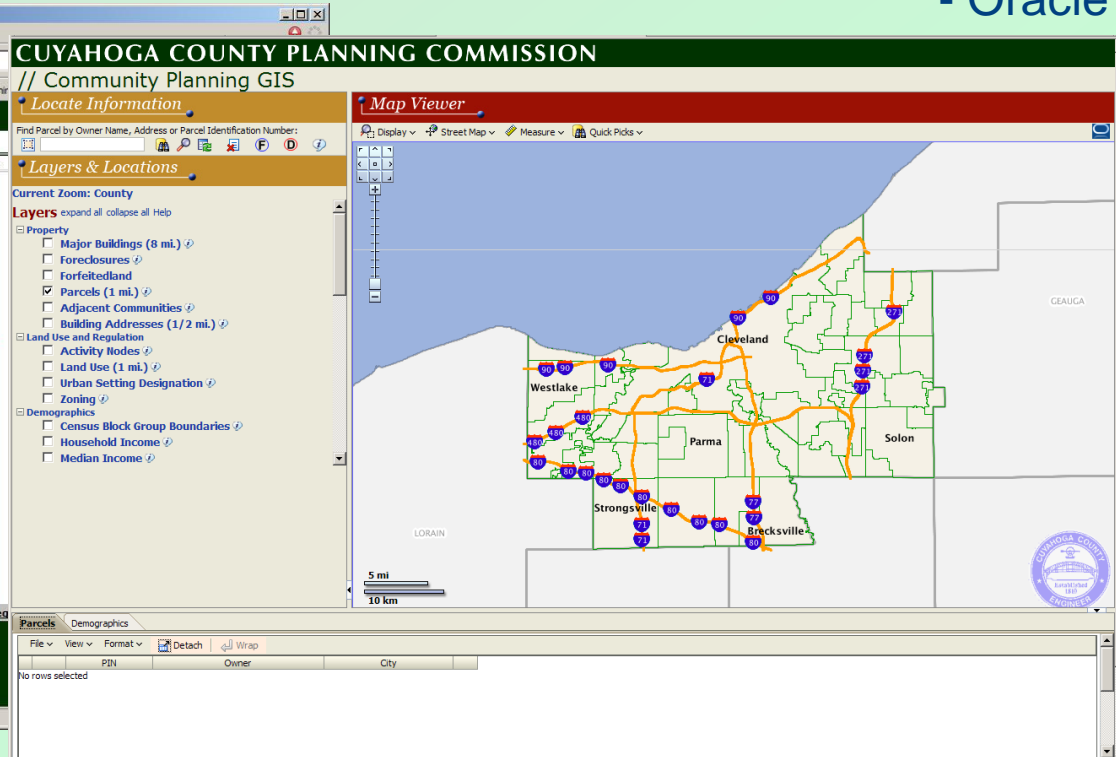
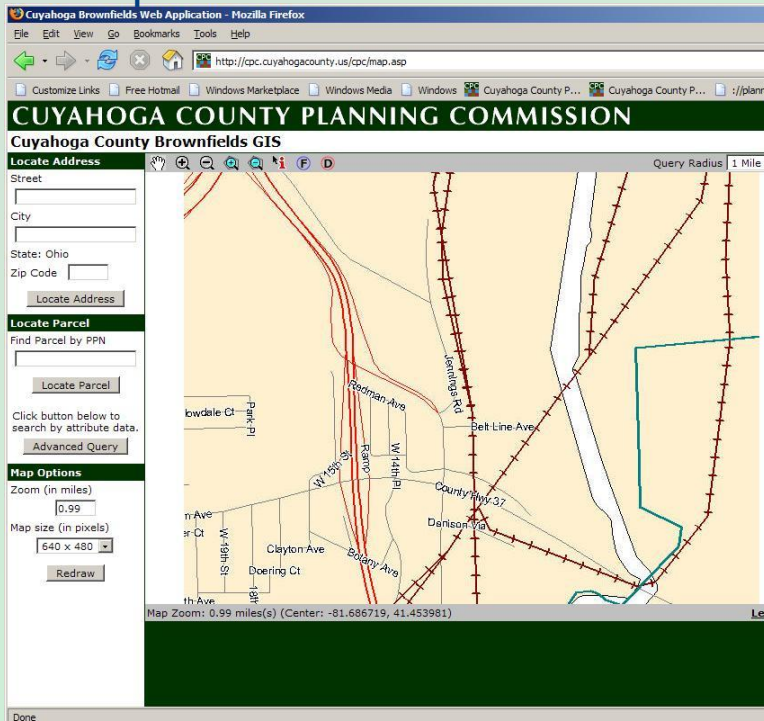


Greenprint Viewer

- History of CCPC Online Viewers:

Brownfields GIS (1999)
- MapInfo

Community Planning GIS (2009)
- Oracle



Greenprint Viewer

Greenprint 2015



County IT Infrastructure:

- ArcGIS Server
- GeoCortex Application Development
 - HTML5
 - Mobile-ready



Greenprint Viewer

Demonstration

The screenshot displays the Greenprint Viewer web application interface. At the top, there is a blue header with the "County Planning" logo on the left, a search bar in the center, and a "Sign in" link on the right. Below the header, a navigation bar includes a "Home" button, a "I want to..." dropdown menu, and a "Base Maps" selector. The main content area is split into a left sidebar and a central map. The sidebar contains a welcome message, the "Greenprint Viewer" title, a brief description of the tool, a highlighted instruction to use the "Map Layers" button, and a link to the "Technical Guide". The central map shows a detailed view of Cuyahoga County with various water features, infrastructure, and green infrastructure layers. A scale bar at the bottom left indicates 0, 2, and 4 miles. The bottom right corner of the map area contains the text "USGS TNM | Cuyahoga GIS | Cuyahoga County Planning Commission, Cuyah..."

County Planning

Search... Sign in

Home < I want to... Base Maps

Welcome to the Cuyahoga County Planning Commission's

Greenprint Viewer

This mapping tool provides insights into various aspects of Cuyahoga County's green infrastructure and its interaction with the built environment.

To get started, use the Map Layers button in the lower left corner of this panel.

For detailed information on each of the map layers, as well as general instructions, see the [Technical Guide](#) link in the lower left corner of the map.

County Planning

CUYAHOGA COUNTY PLANNING COMMISSION

0 2 4mi

[Technical Guide](#)

USGS TNM | Cuyahoga GIS | Cuyahoga County Planning Commission, Cuyah...

Cuyahoga County Greenprint - 2015

Questions?
&
Thanks!

Daniel Meaney, GISP

Manager, Information & Research

216-443-3709

dmeaney@cuyahogacounty.us

Elaine Price

Program Manager – Greenspace

216-443-3721

eprice@cuyahogacounty.us

www.planning.co.cuyahoga.oh.us

216-443-3700



Cuyahoga
County Planning
Commission