

# The GreenPrint: A Regional Vision for Land Conservation and Acquisition

**James W. Beever III**  
**Senior Planner**



*Planning, Protecting and  
Improving for our future  
generations*

**Greenprinting** is the creation of conservation scenarios that help communities make informed conservation decisions.

Greenprinting can galvanize public support and encourage partners to work toward common conservation goals.

Greenprinting often involves use of state-of-the-art maps and models created with Geographic Information System (GIS) software that combines layers of spatial and demographic information to guide growth management efforts.

## **Conservation Priorities**

A community defines its own criteria for the lands it wants to protect. Its highest priority lands are then mapped on a greenprint.

## **Gap Analysis**

Mapping reveals which areas are most in need of parks and where land in those areas might be available to create parks.

## **Watershed Protection**

By mapping stream buffer areas, slope profiles, soil types, and other data, greenprinting shows where land conservation can protect water quality.

## **Fragmentation Modeling**

These models identify lands whose conservation would create contiguous natural resources such as forests, wetlands, and wildlife habitat.

## **Trail Linkages**

Greenprinting finds opportunities to link or expand existing trail systems.

## **Development Forecasting**

Models project which lands—including important conservation lands—are most likely to be developed for commercial or residential uses.



# The East Gulf of Mexico Coastal Conservation Corridor

<http://www.egmccc.org>

The East Gulf of Mexico Coastal Conservation Corridor Project (EGMCCC) enhances cooperative planning between public and private land acquisition entities and encourages planning for landscape scale conservation by providing access to a comprehensive geospatial database.

The EGMCCC provides new opportunities for federal, state, and regional governments to work together with local governments and the public sector in exploring and developing innovative programs for the protection of fish and wildlife resources.

The project serves as a reference tool designed to assist decision makers and planners in focusing land acquisition, regional planning, and regulatory recommendations taking both significant details as well as the landscape scale context into consideration.

Inserting this information into decision making processes will help protect habitat, preserve biodiversity, and allow our resources to continue to survive, be enjoyed by residents, visitors, and future generations.





# Primary Goal of EGMCCC

Establish a multi-jurisdictionally governed partnership to identify, create, and manage a conservation corridor system composed of habitats ranging from xeric scrub to riverine wetlands by creating a comprehensive GIS database.



*Tippen Bay Ranch*





## **The East Gulf of Mexico Coastal Conservation Corridor (EGMCCC) Project:**

- **Planning for landscape scale conservation.**
- **Enhancing cooperative planning between public and private land acquisition entities.**

# Products

- A map series showing opportunities for landscape-scale connections.
- An interactive conservation database served via an internet map site.



# Uses

- A **reference tool** for land acquisition, regulatory, and water management programs.
- Resource for **decision-makers** to see significant details and the landscape-scale context.



# Principal Partners

- US Fish & Wildlife Service - South Florida Ecological Services Office
- Charlotte Harbor National Estuary Program
- Florida Department of Environmental Protection
- Florida Fish & Wildlife Conservation Commission
- Southwest Florida Regional Planning Council
- The Nature Conservancy - Florida Chapter

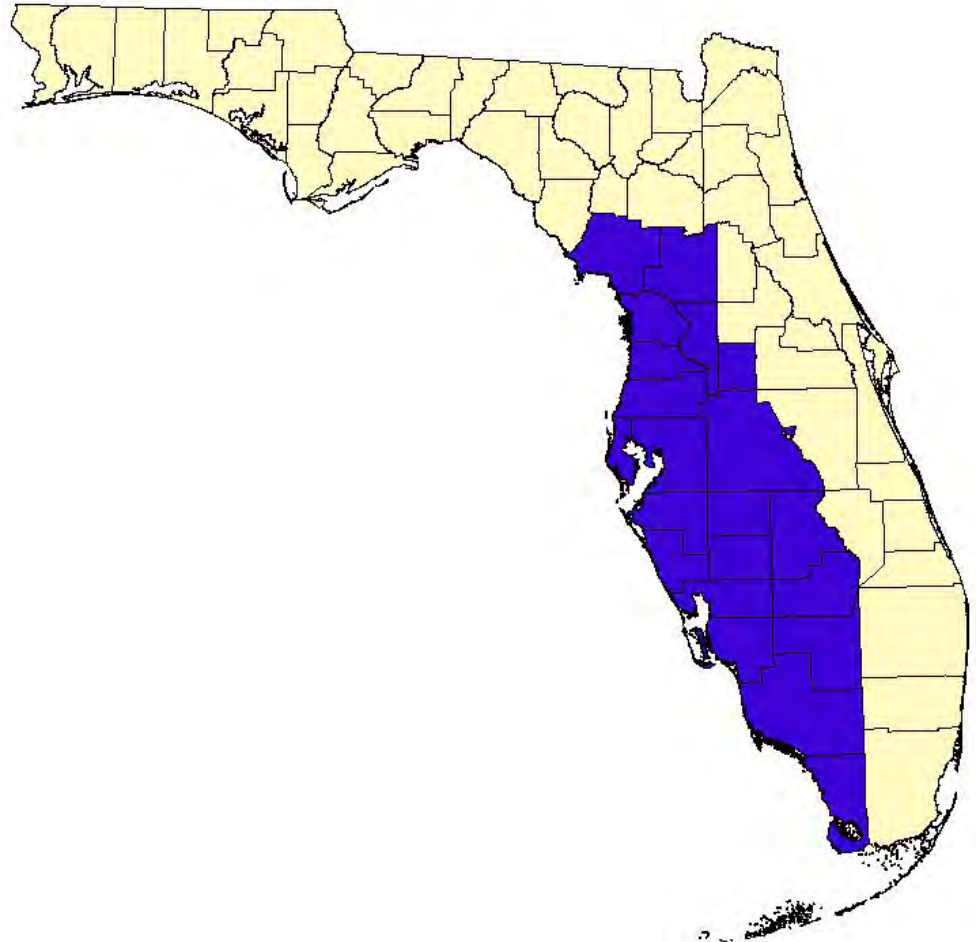


*Sandhill cranes*





- 21 Counties & Cities
- 4 Federal Agencies
- 3 National Estuary Programs
- 1 National Estuarine Research Reserve
- 7 Non-Profit Conservation Groups
- 3 Regional Planning Councils
- 3 State Agencies
- 3 Water Management Districts





Department of Environmental Protection  
FDEP – Bureau of Mine Reclamation  
University of Florida - Geoplan Center  
Florida Natural Area Inventory  
Florida Marine Research Institute  
Florida Resources & Environmental Analysis Center  
Florida Fish & Wildlife Conservation Commission  
Florida Coastal Management Program  
Florida Department of Transportation  
Florida Gulf Coast University  
Charlotte County GIS Department  
Collier County Natural Resources Department  
Collier County Property Appraiser  
Gilchrist County Property Appraiser  
Glades County Property Appraiser  
Hendry County Property Appraiser  
Highlands County Planning Department  
Hillsborough County Property Appraiser  
Lake County Growth Management Department  
Lee County Property Appraiser  
Lee County Planning Division  
Manatee County Property Appraiser  
National Wetlands Inventory  
Monroe County Property Appraiser  
Pasco County Property Appraiser  
Polk County Property Appraiser  
Polk County Environmental Services  
Sarasota County Natural Resources Department  
Sarasota County Property Appraiser

City of North Port GIS Department  
City of Sarasota  
  
Central Florida Regional Planning Council  
Southwest Florida Regional Planning Council  
Tampa Bay Regional Planning Council  
  
St. Johns River Water Management District  
South Florida Water Management District  
Southwest Florida Water Management District  
Rookery Bay National Estuarine Research Reserve  
Estero Bay Aquatic & State Buffer Preserve  
Charlotte Harbor Aquatic & State Buffer Preserve  
Charlotte Harbor National Estuary Program  
Sarasota Bay National Estuary Program  
Tampa Bay Estuary Program  
US Fish & Wildlife Service  
Multi-Species Ecosystem Recovery Implementation Team  
NOAA Coastal Services Center  
United States Geological Survey  
USDA - Natural Resources Conservation Service  
USEPA  
Marion County Property Appraiser  
Friends of Rookery Bay  
The Nature Conservancy  
Calossa Land Trust and Nature Preserve  
Sanibel-Captiva Conservation Foundation  
  
54 partners

# Coordination with Other Projects in South Florida

- Southwest Florida Regional Wildlife Habitat Plan
- Southwest Florida Feasibility Study (SWFFS)
- Comprehensive Everglades Restoration Plan (CERP)
- South Florida Ecosystem Restoration
- Multi-species Recovery Plan/ Multi-species Ecosystem Recovery Implementation Team

*Manatees in spring*



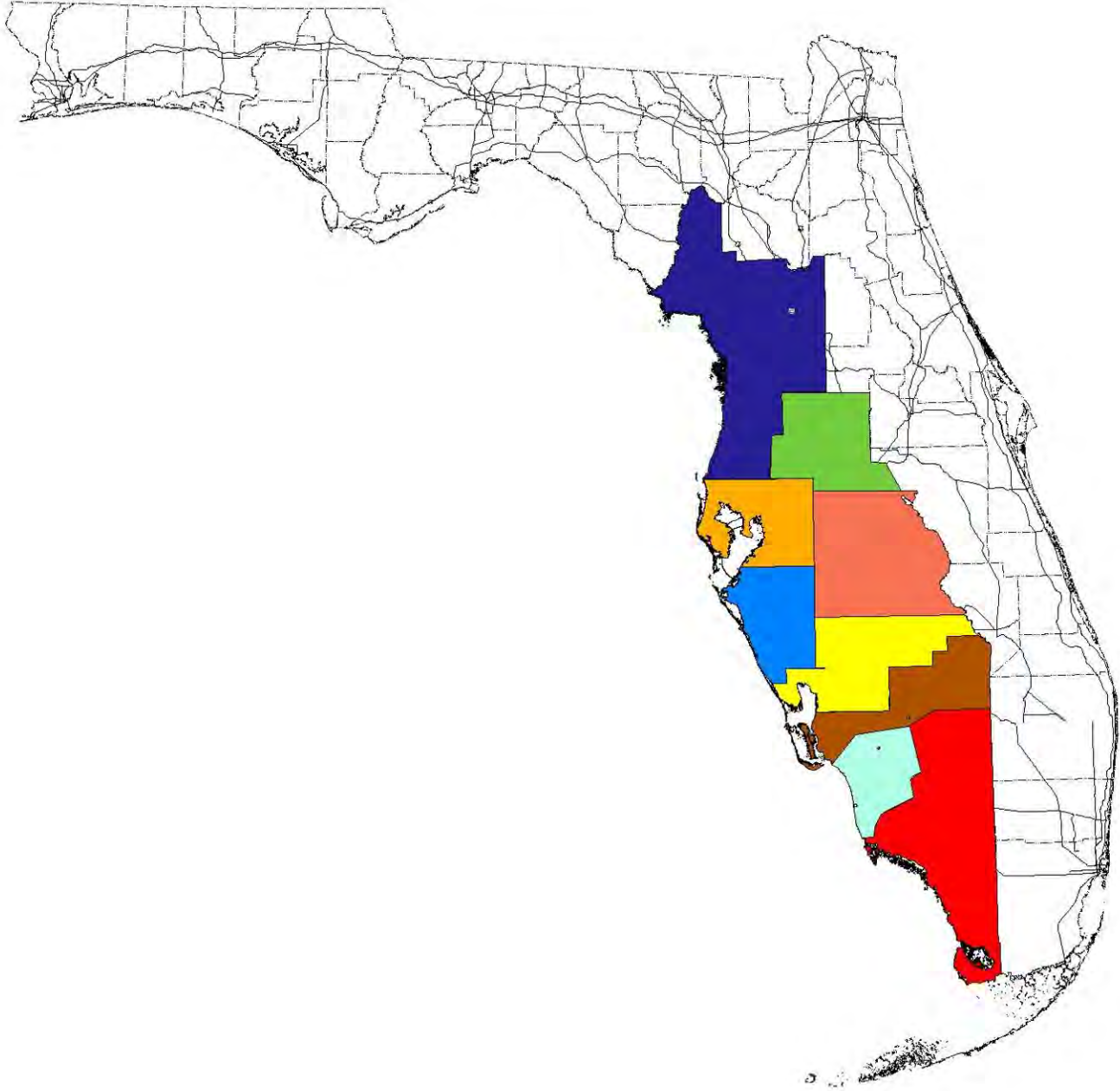
*Roseate Spoonbills*



*estuarine marsh*



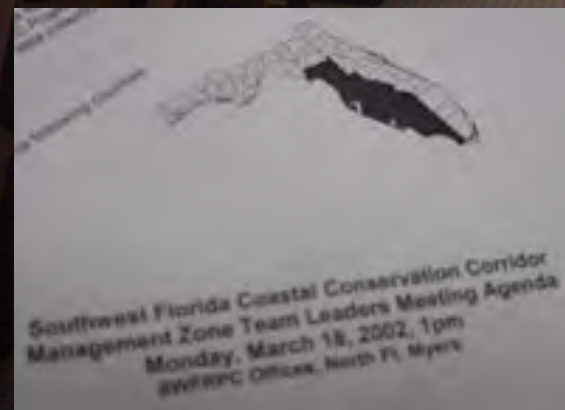


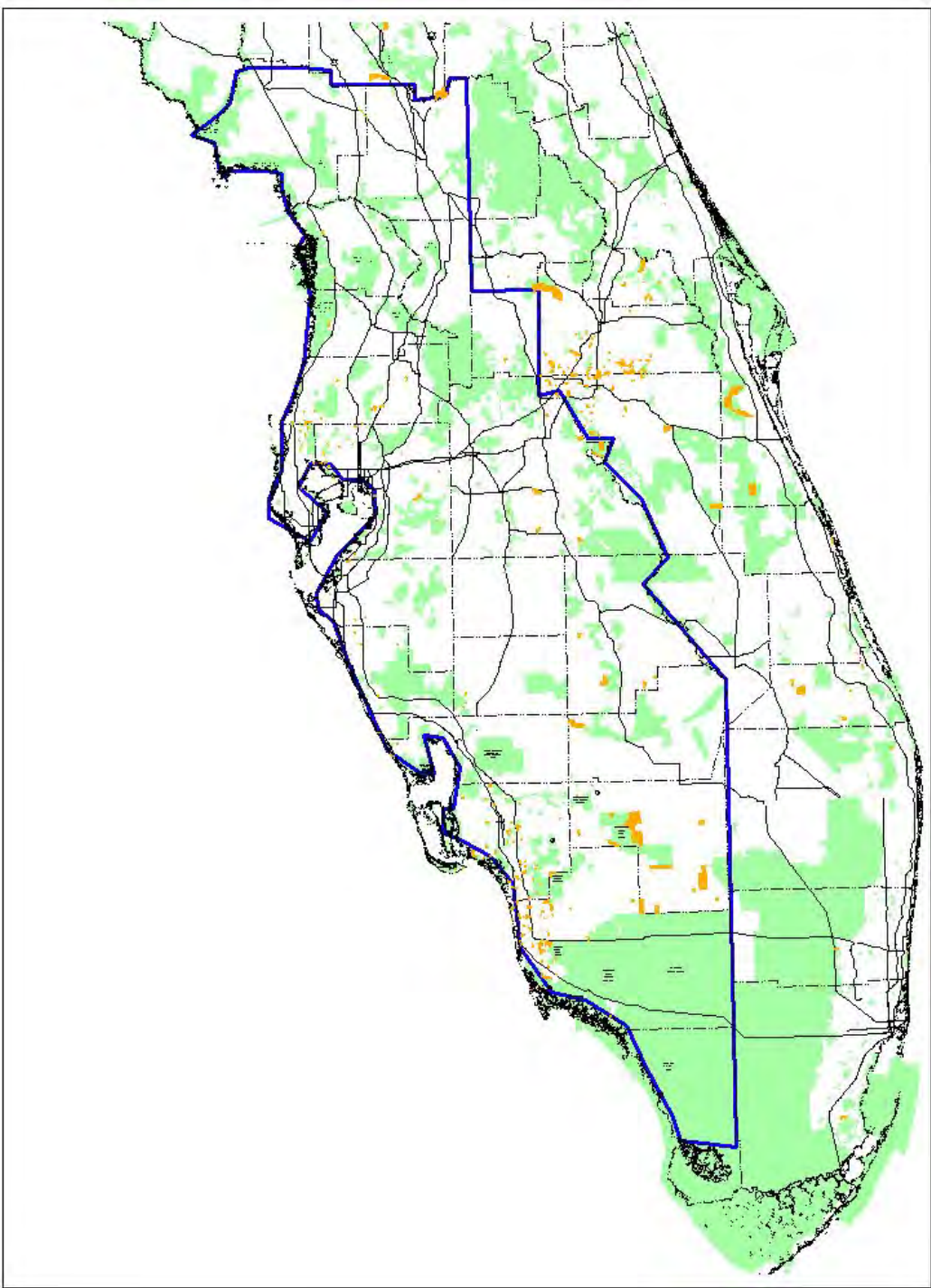


## Team Leaders

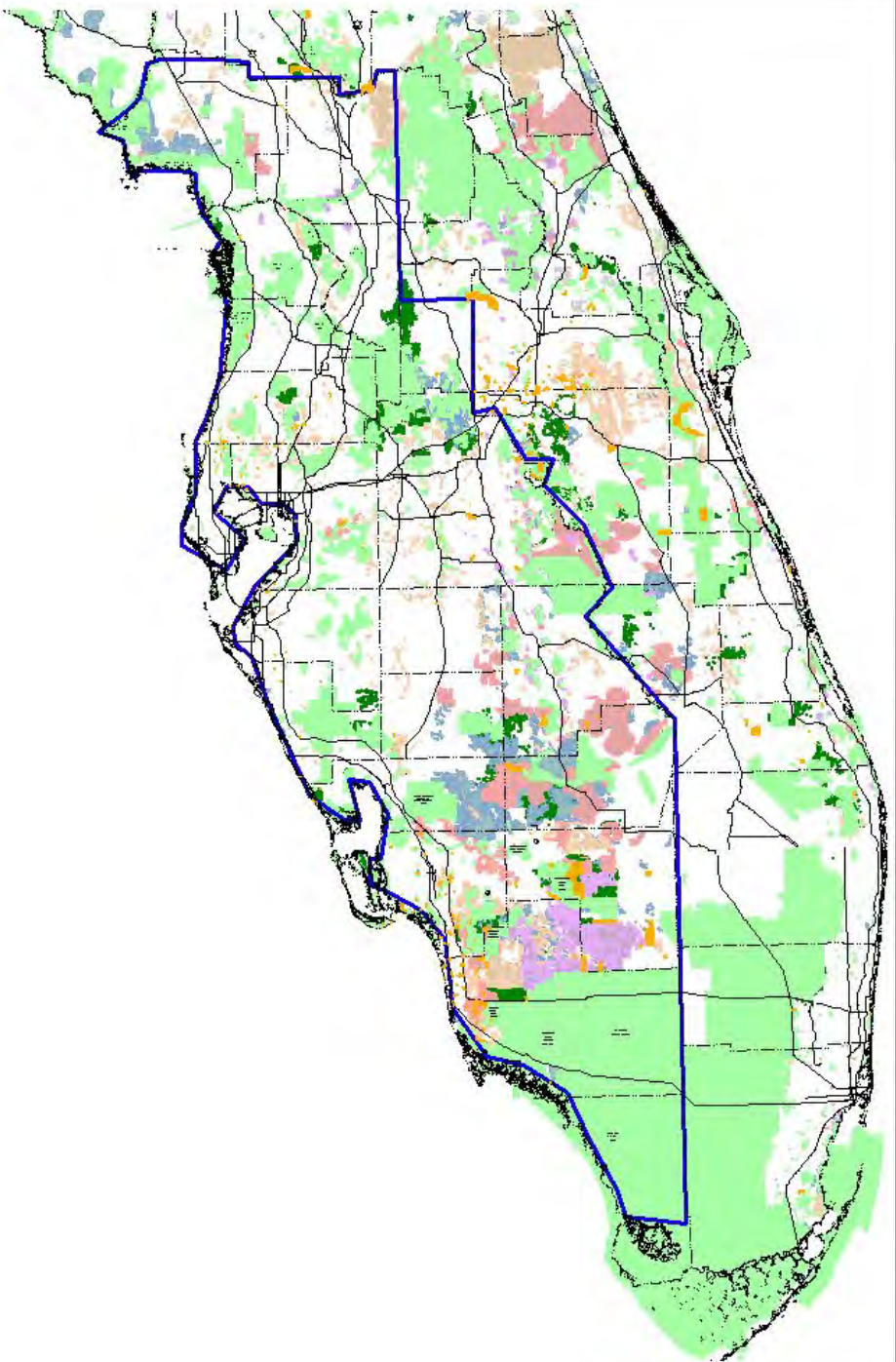
- **Big Cypress** – Bob Sobczak, BCNP- Big Cypress
- **Caloosahatchee** - Lynda Thompson, Lee County
- **Charlotte Harbor** - Lisa Beever, CHNEP
- **Estero/CREW** - Heather Stafford, FDEP-Estero Bay
- **Green Swamp** - Marian Ryan, Sierra Club
- **Myakka River/Sarasota Bay** - Gary Raulerson, SBNEP
- **Peace River** - Brian Sodt, CFRPC
- **Springs Coast/Withlacoochee** - Mercily Toledo, FDEP
- **Tampa Bay** - Suzanne Cooper, TBRPC & TBABM

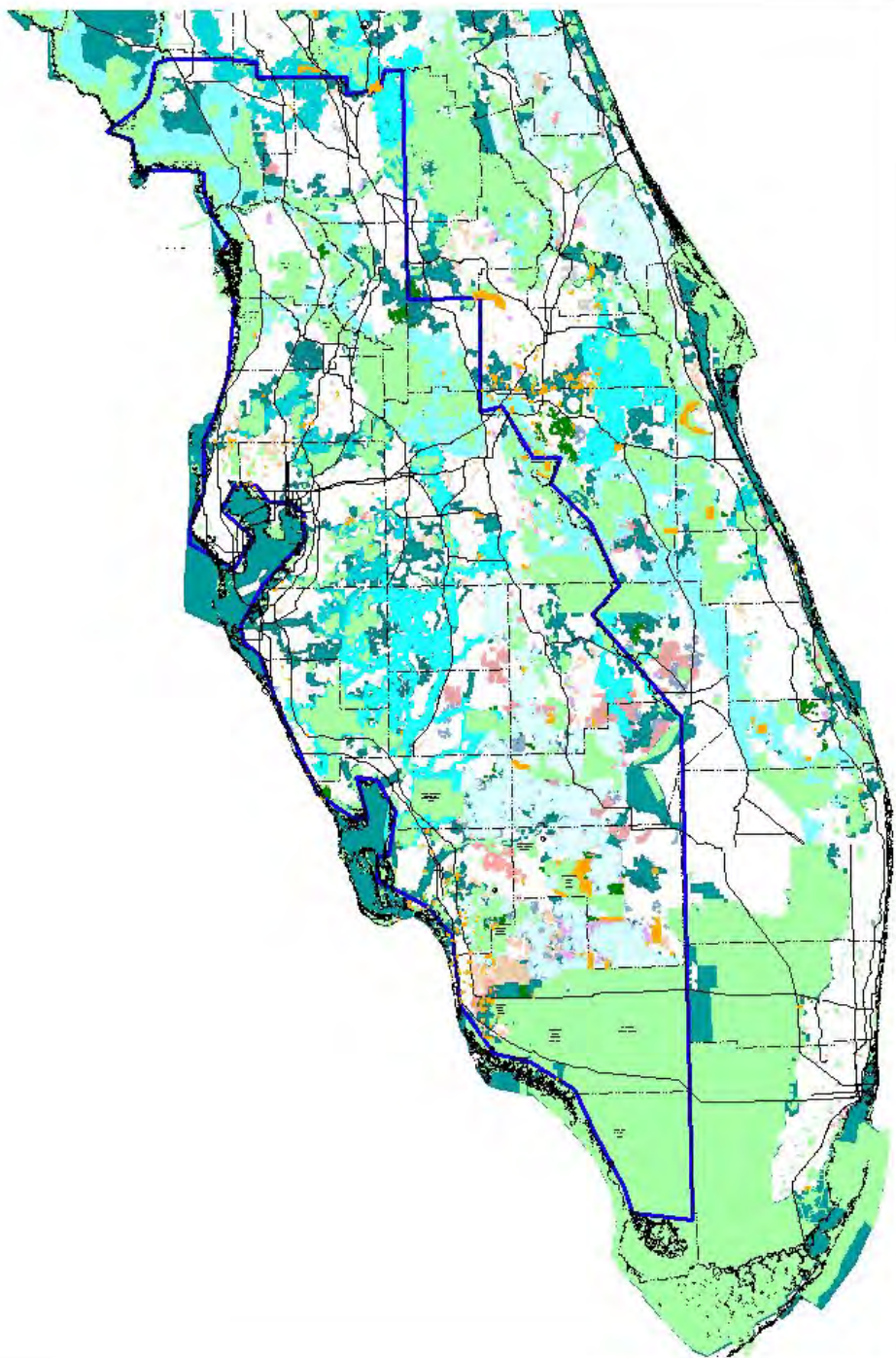




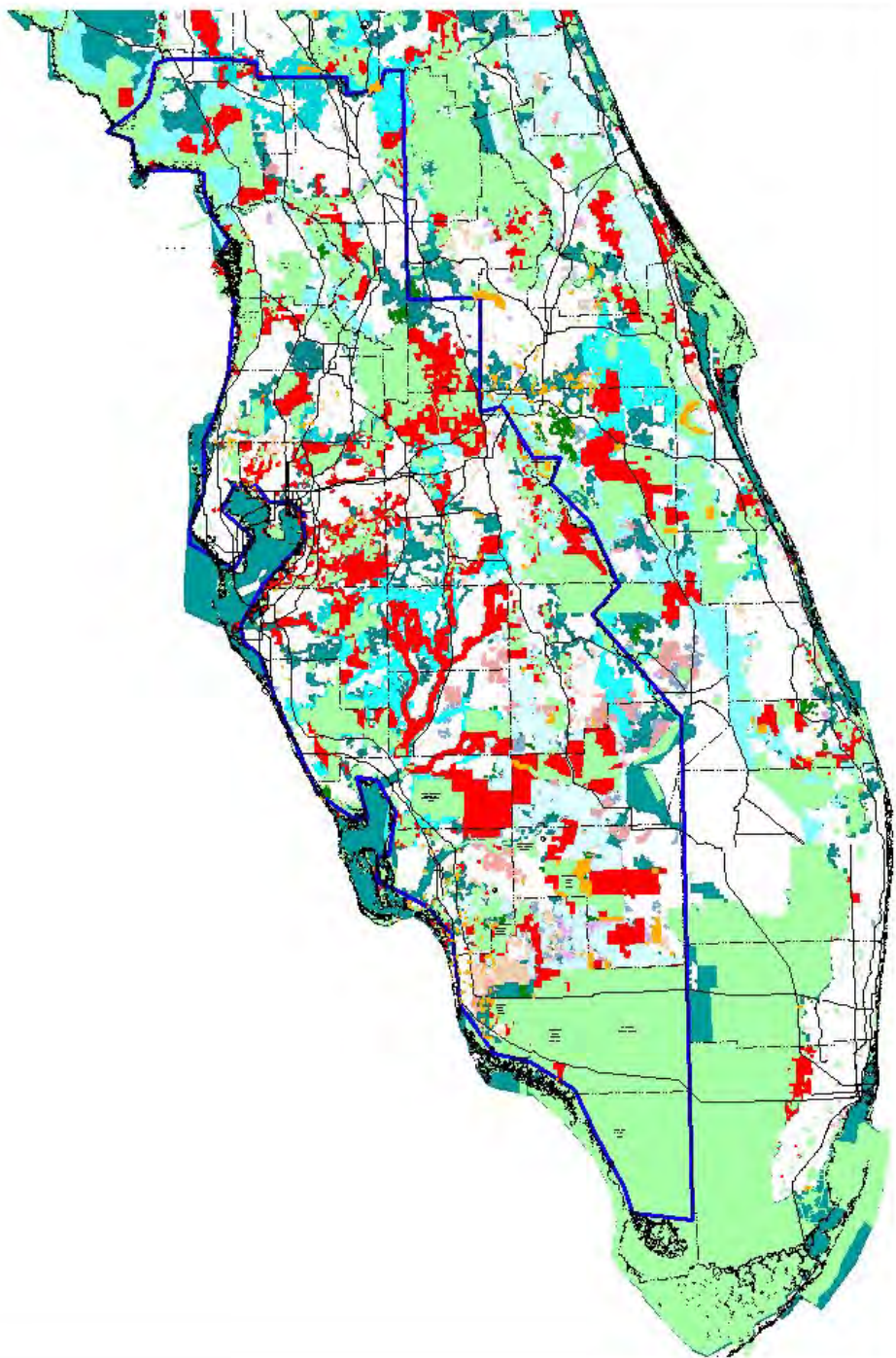












# Crystal River to Rookery Bay



## Legend

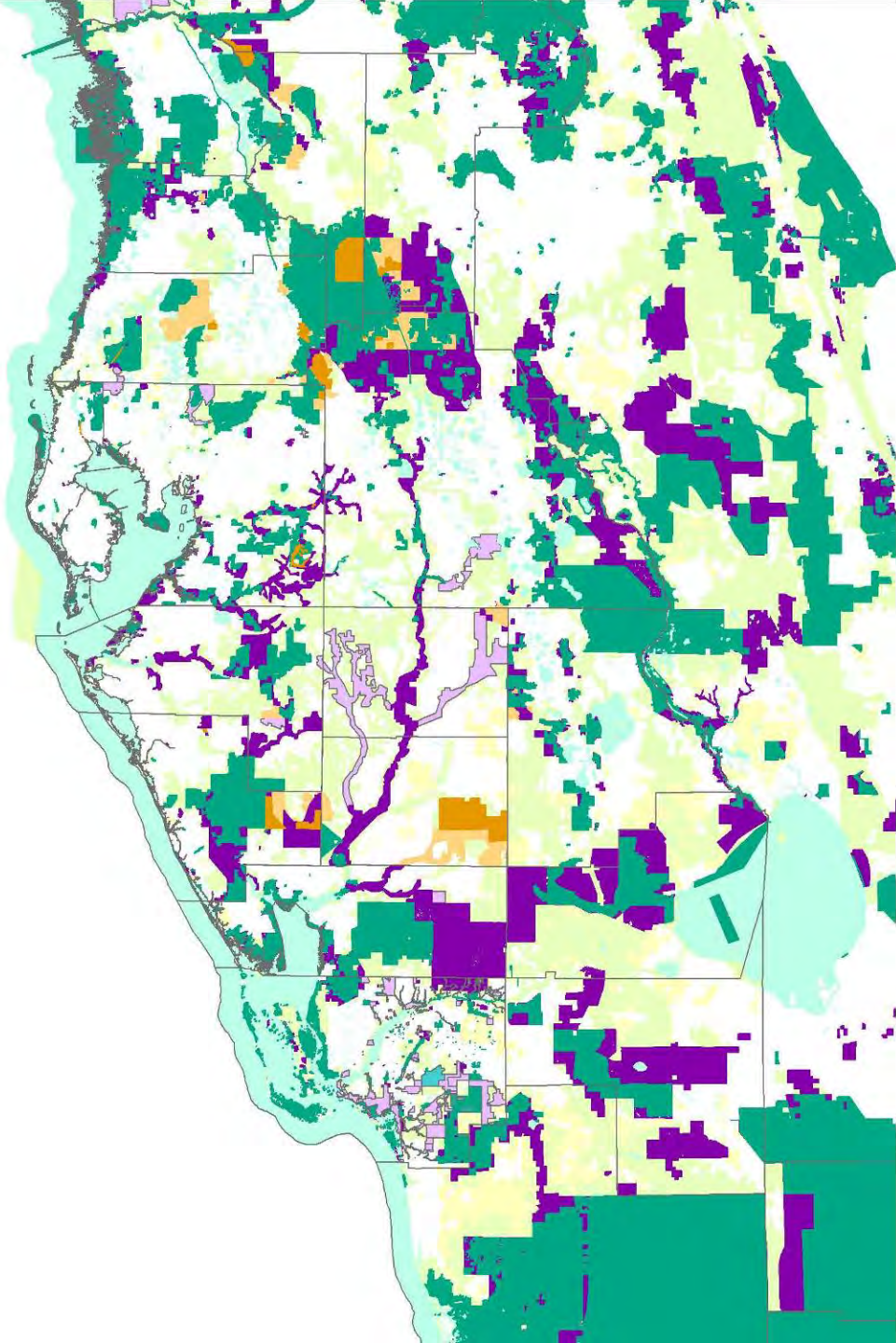
### Land Acquisition Status

-  Acquired
-  Conservation Easement
-  Proposed Acquisition
-  Proposed Conservation Easement
-  Under Study
-  DEP Greenways
-  Strategic Habitat Conservation Areas

Source: Charlotte Harbor National Estuary Program  
The Nature Conservancy  
Florida Natural Areas Inventory  
Florida Department of Environmental Protection  
Florida Fish and Wildlife Conservation Commission  
Southwest Florida Water Management District  
South Florida Water Management District  
Polk, Sarasota, and Lee Counties

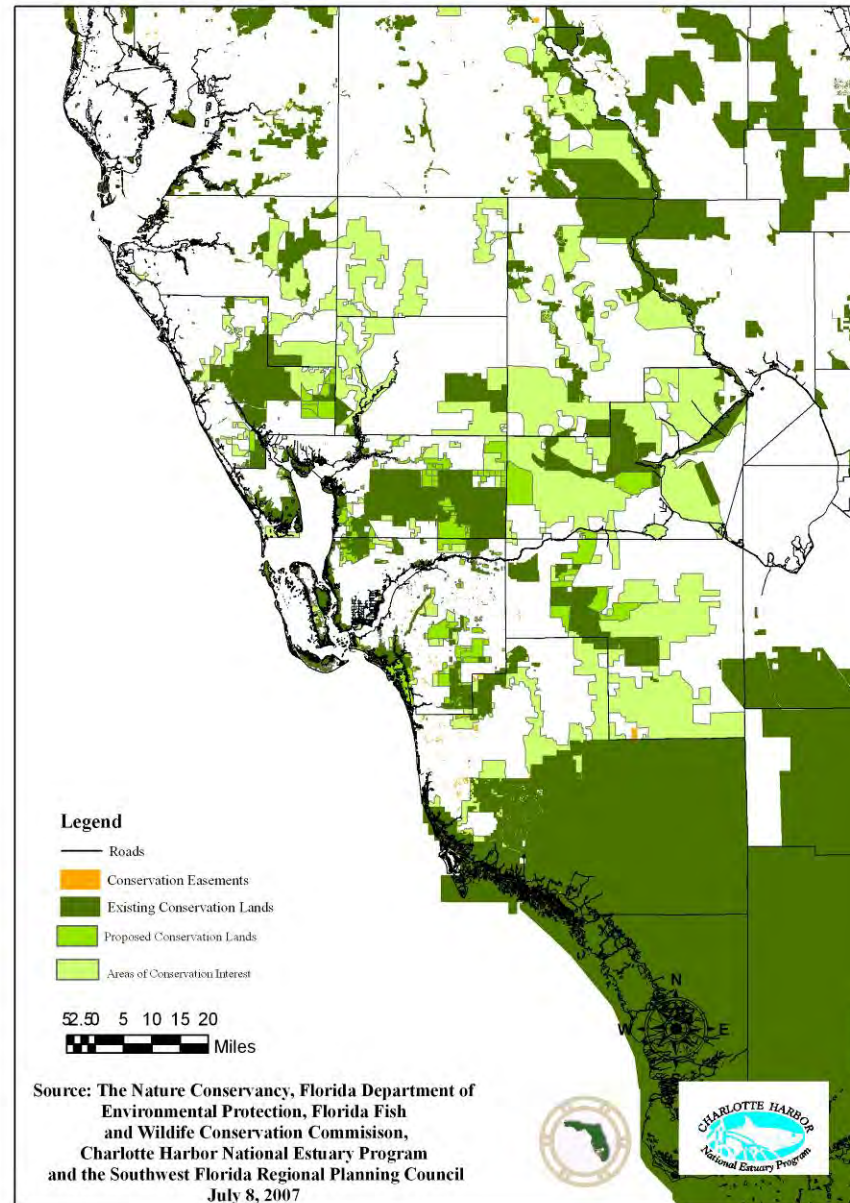
Date: August 14, 2003

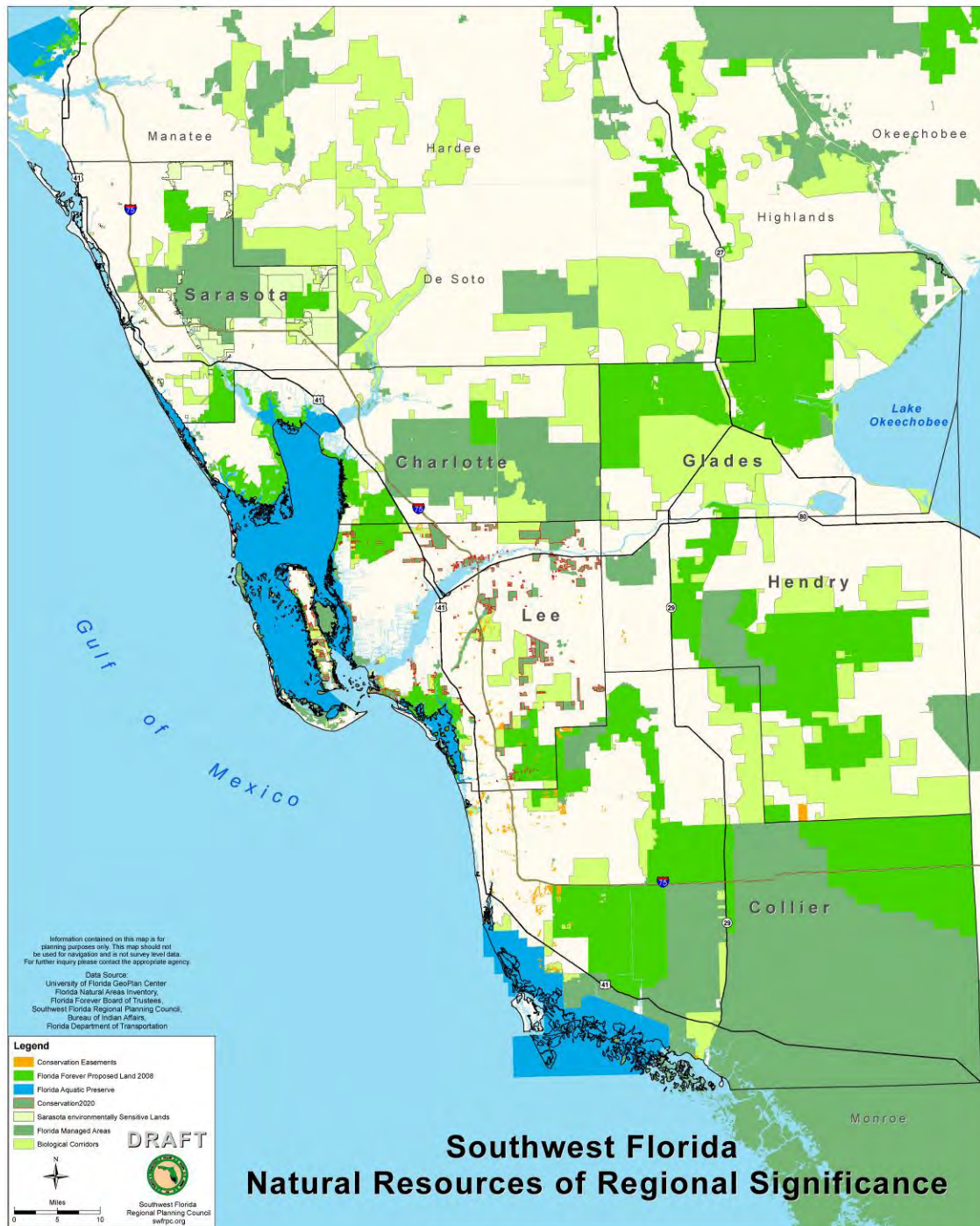
0 5 10 20 30 40 50 Miles





# Year 2006 Conservation Areas of Interest Coastal Conservation Corridor Plan







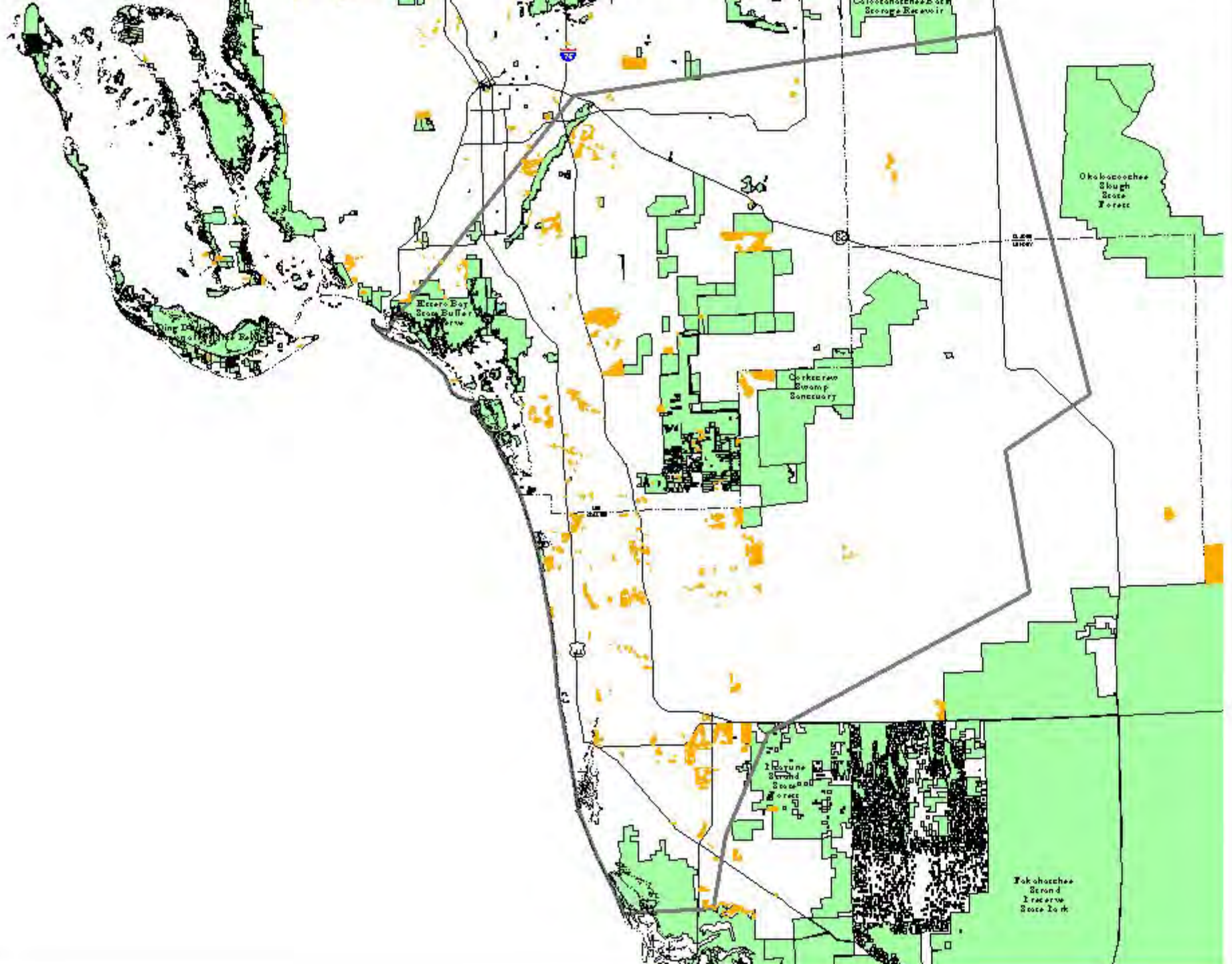


**Restoration Coordination Team  
3/10/03**

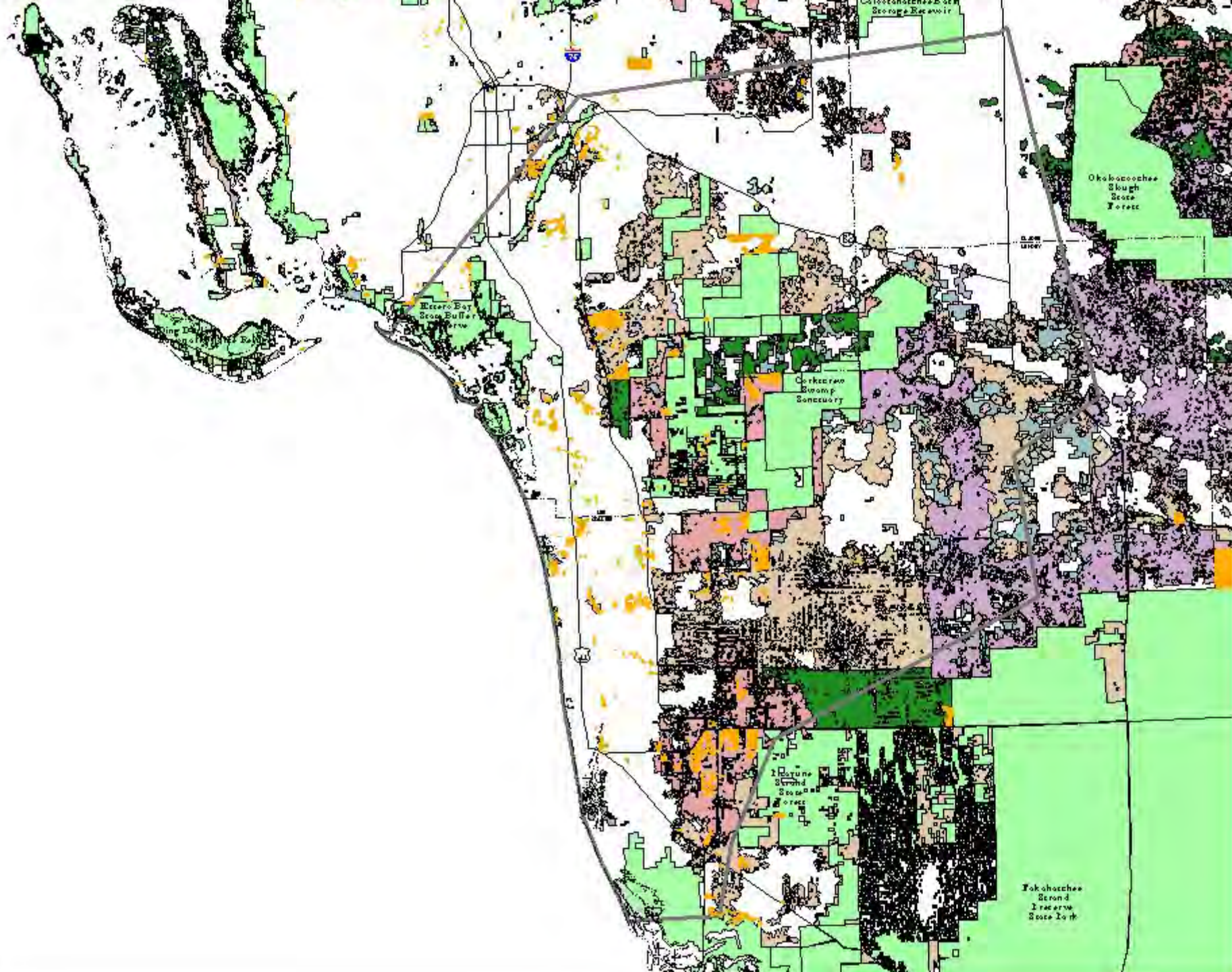




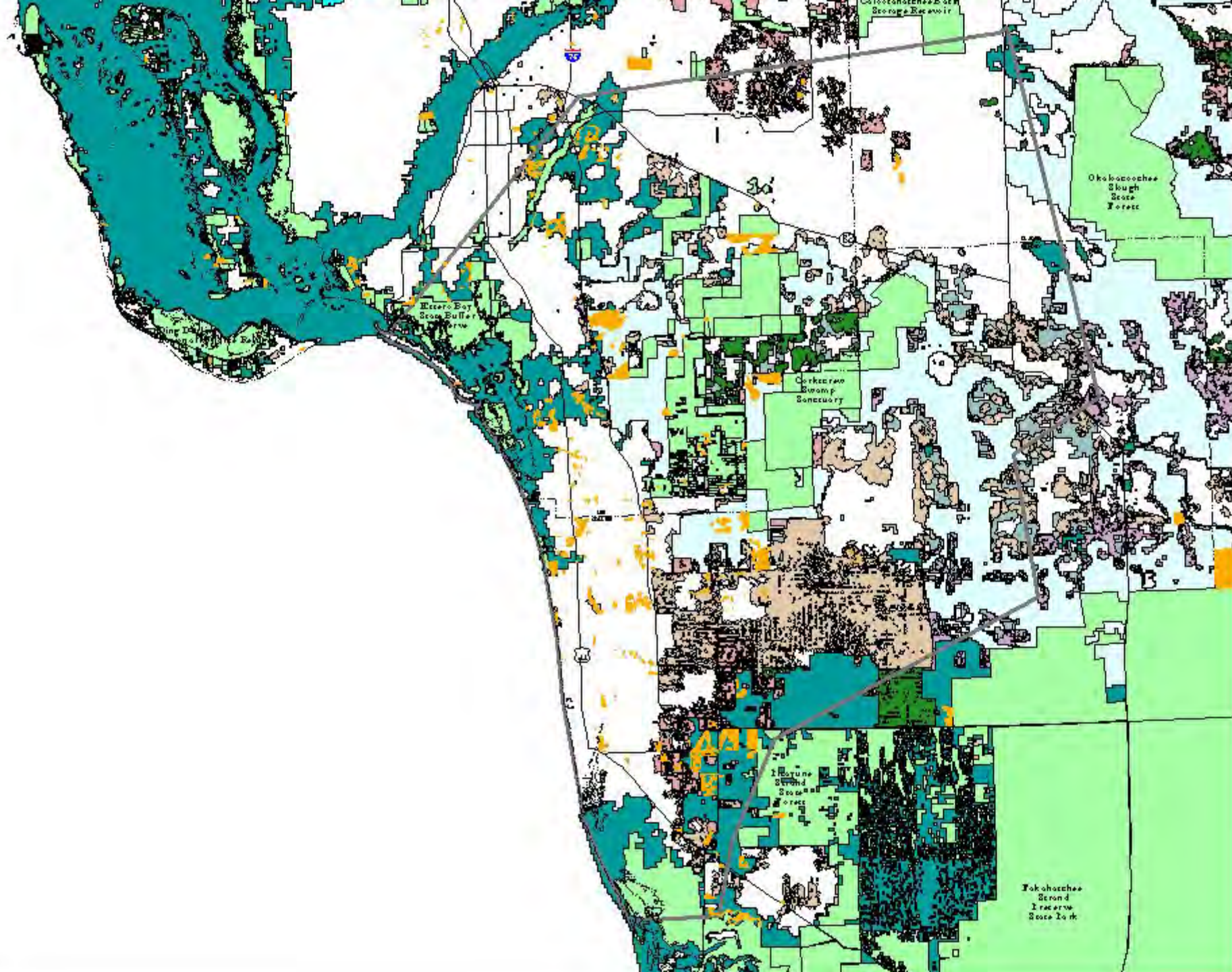




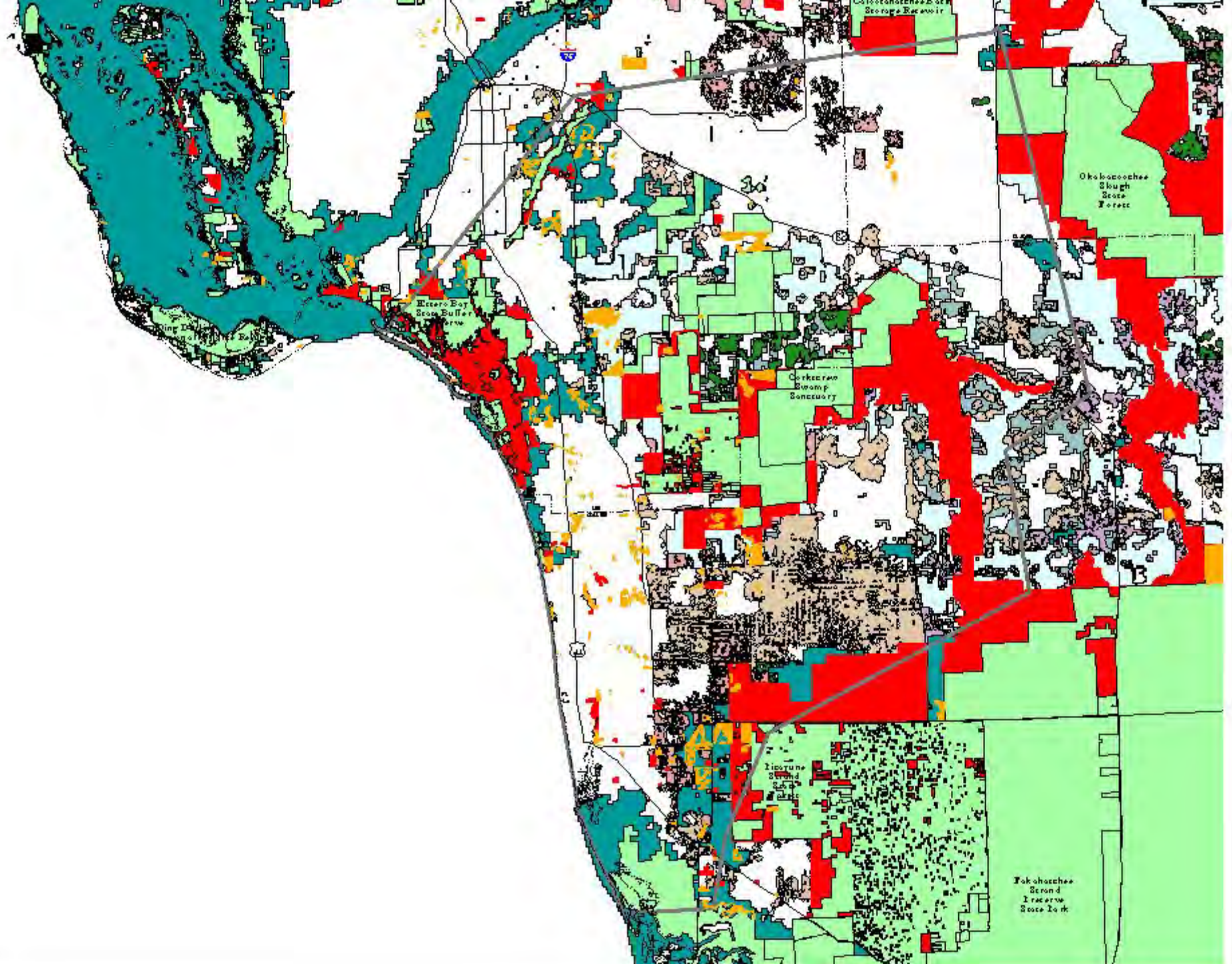




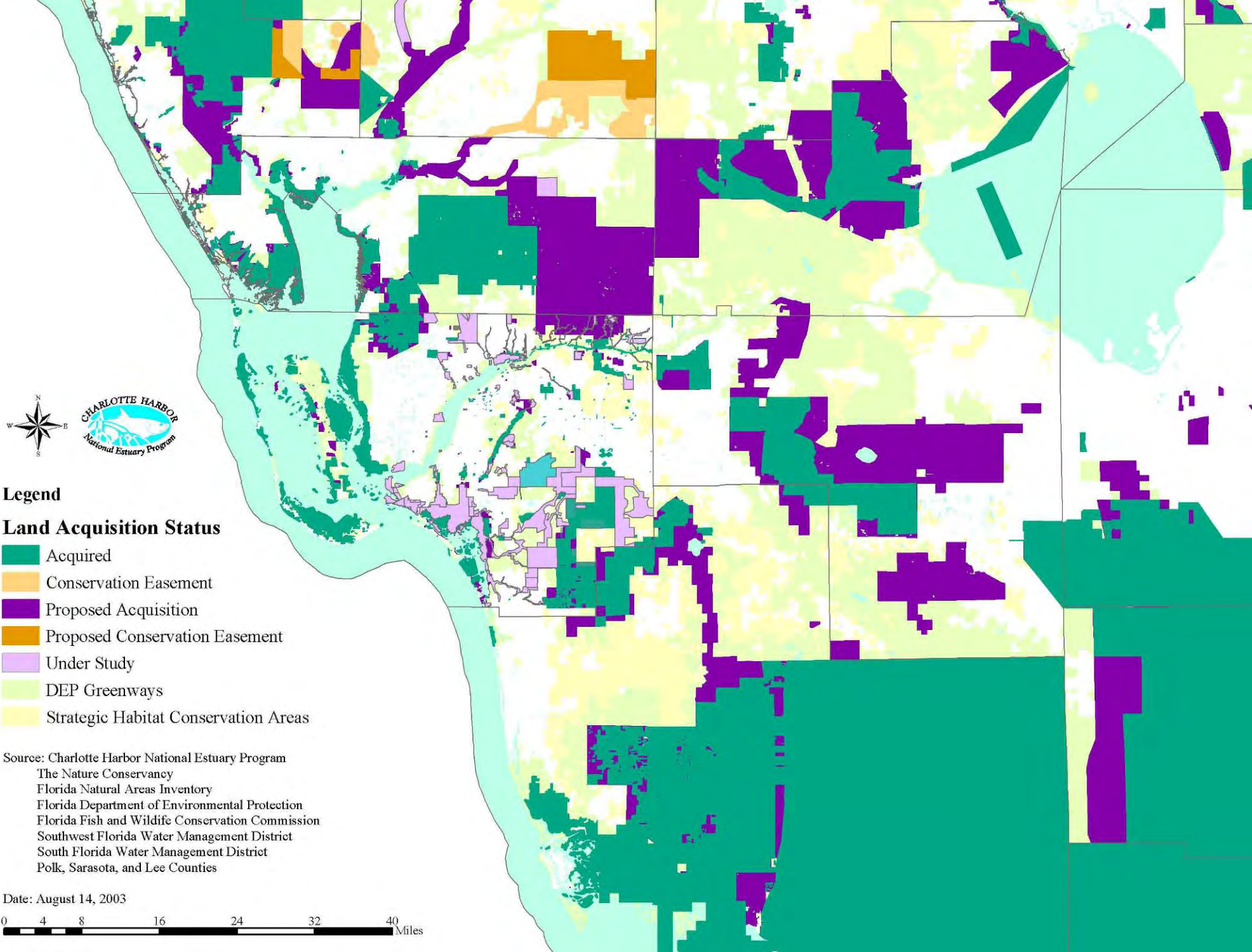












**Legend**

**Land Acquisition Status**

- Acquired
- Conservation Easement
- Proposed Acquisition
- Proposed Conservation Easement
- Under Study
- DEP Greenways
- Strategic Habitat Conservation Areas

Source: Charlotte Harbor National Estuary Program  
The Nature Conservancy  
Florida Natural Areas Inventory  
Florida Department of Environmental Protection  
Florida Fish and Wildlife Conservation Commission  
Southwest Florida Water Management District  
South Florida Water Management District  
Polk, Sarasota, and Lee Counties

Date: August 14, 2003

0 4 8 16 24 32 40 Miles



Year 2006 Coastal Conservation Corridor Map  
with Charlotte, Collier, Glades, Hendry and Lee Counties

- Key
- Light Green = Existing Conservation Areas All Entities
  - Orange = Private Conservation Easements
  - Turquoise= Protected Waters and Proposed Land Acquisitions (Florida Forever, SOR, etc.)
  - Magenta = Strategic Habitat Conservation Areas (2003 layer)
  - Red = Priority Acquisition/Protection Areas

Source: SWFRPC March 4, 2008





A River Otter could eat his way along  
hundreds of miles of riverine and  
estuarine corridor...



# Available Database Elements for possible use as Criteria by anyone

- species occurrences
- landscapes/greenways
- habitat areas
- surface water
- natural communities
- wetlands

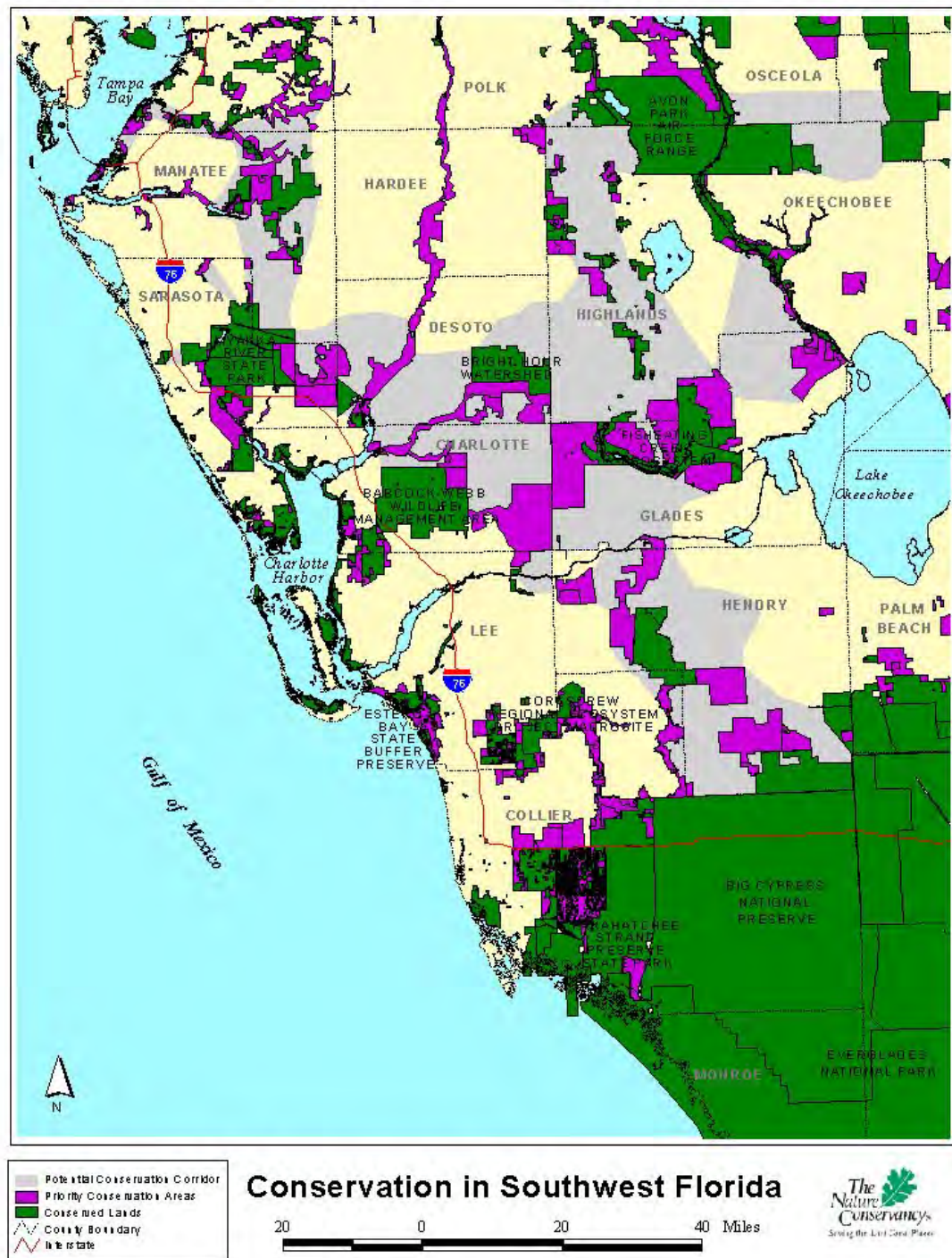



*Florida Panther in  
Sarasota County*



# Panther Paths

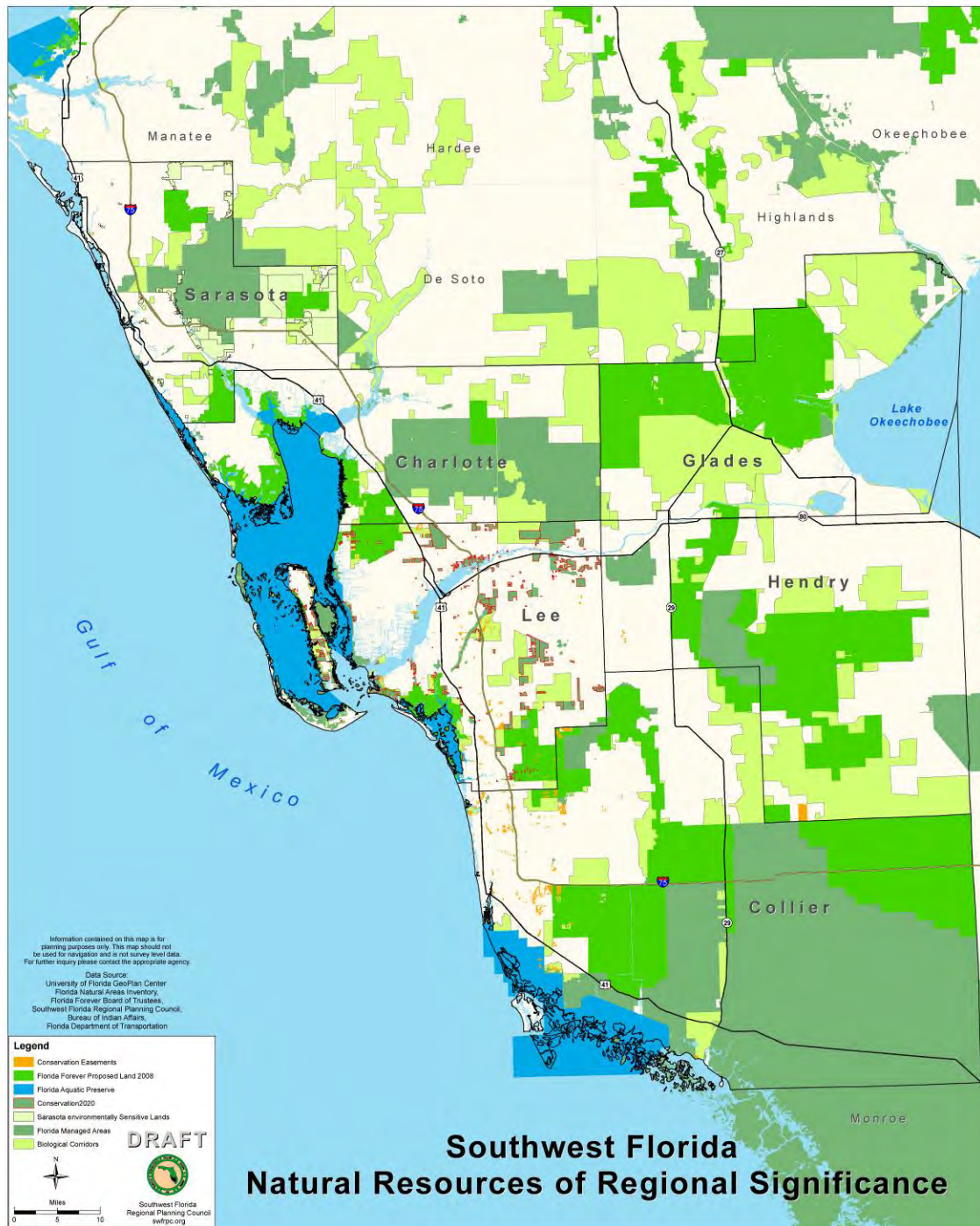
*Grey area illustrates potential panther corridor.*





A Florida black bear could walk from  
Charlotte Harbor to Lake Okeechobee  
to the Big Cypress National Preserve





**James W. Beever III**  
**Senior Planner**  
**jbeever@swfrpc.org**



**Dan Cobb**  
**GIS Specialist**  
**dcobb@swfrpc.org**

**Lisa B. Beever, PhD**  
**NEP Director**  
**lbbeever@swfrpc.org**



**Mary M. Bryant**  
**GIS Specialist**  
**mbryant@tnc.org**

